

Ball transfer units

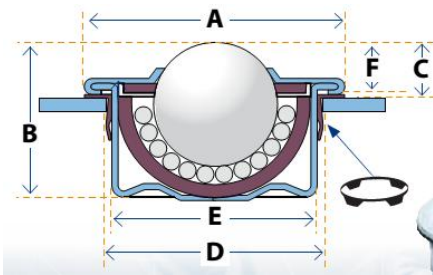
Ball transfer units provide low friction motion in two directions but restrict motion in the third. Commonly used in a table arrangement for conveying, freight and package handling but also used for tooling and sheet metal applications.



A ball transfer unit has a large high load central ball supported by a large number of smaller balls. This configuration is encased in a spherical body with the arrangement offering high load capacity and low friction. Use of hardened bearing steels and heat treated bodies ensures a long service life with more economical types using pressed steel bodies. For challenging environments types with seals and drain/debris channels are available. Types are made with carbon or stainless steel bodies, nylon or stainless steel balls and spring loaded.

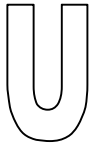
Light duty push fit

Style is designed to be drop fit into a plate with pre-cut holes. Comes with a fixing clip to retain unit and allow for irregular bore and diameter. Stainless steel and acetal ball types also available.



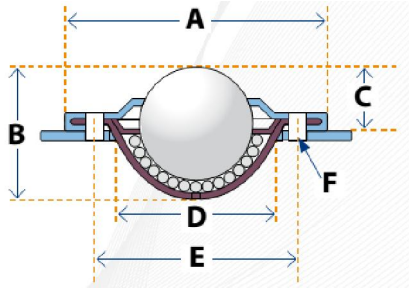
	Max Load kg	Ball Ø	A	B	C	D	E	F
L15C	50	15	31	21	9.8	24.8-25	24	9.5
L22C	160	22	45	29.5	10.1	37-37.3	36	9.8
L30C	250	30	55	37	14.1	46.3-46.7	45	13.8

Regular stock items in bold type



Light duty Saturn type

Style is designed to be drop fit into a plate with pre-cut holes and fastened down. Stainless steel and acetal ball types also available.

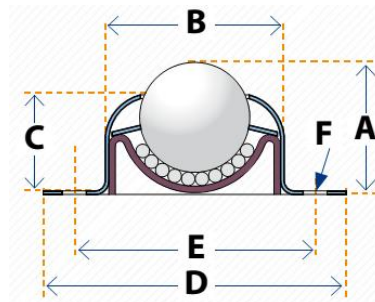


	Max Load kg	Ball Ø	A	B	C	D	E	F
LD15	20	15	35.2	19.1	9.5	23.9		
LD16	15	15	41	19	10.8	24	30	2x3.4
LD23	120	22	45	27.7	9.8	33	39	3x3.5
LD26	60	25	56	30	14.6	36	45	2x4.0

Regular stock items in bold type

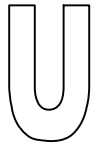
Light duty flange mount

This type can be bolted straight down onto a table.

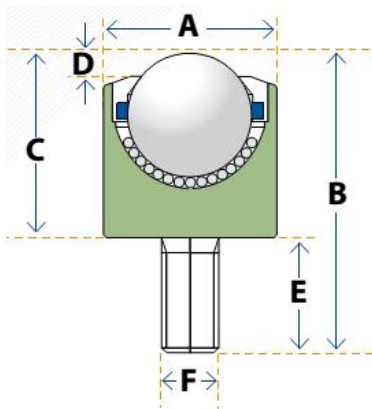


	Max Load kg	Ball Ø	A	B	C	D	E	F
LF25	55	25.4	30.2	42	22.2	69.9x50.8	55.6	2x5.6
LF38	115	38.1	46	66.7	36.2	76.2x76.2	62.7x62.7	4x7.1

Regular stock items in bold type



Medium duty bolt fitting

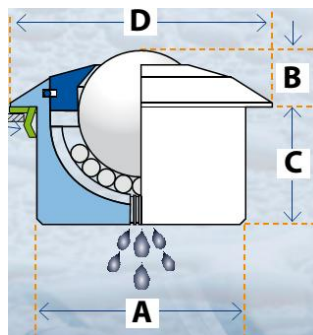
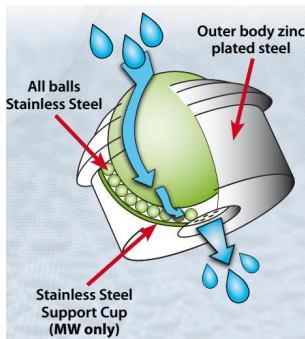


	Max Load kg	Ball Ø	A	B	C	D	E	F
MSP8	12	8	18	27	12	2	15	M6x1
MSP10	20	12	20	29.8	17.8	3	12	M8x1.25
MSP11	25	12	20	48	20	3	28	M6x1
MSP14	50	15	24	32.5	20.5	3.9	12	M6x1
MSP19	75	19	30	46.5	26	4.8	20.5	M8x1.25
MSP22	180	22	36	62.9	37.5	2.6	25.4	M12x1.75
MSP30	350	30	45	69.2	43.8	6.5	25.4	M12x1.75
MSP45	600	45	62	107.3	66	8.5	41.3	M20x2.5

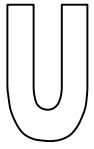
Regular stock items in bold type

MX Extreme type

Machined and case hardened housing with stainless 420 hardened balls for high load and shock resistance. Large drain channels to eject water and or contamination in wet and or dirty environments. Specifically designed for more demanding cargo applications but well suited to a range of demanding situations. Types with fixing clips and all stainless construction are also available.



	Max Load kg	Ball Ø	A	B	C	D	Drain holes	Weight kg
MX30	350	30	45	13.8	23	55	7	0.36
MX45	600	45	62	19	34.5	75	7	0.99



Regular stock items in bold type

Other types available



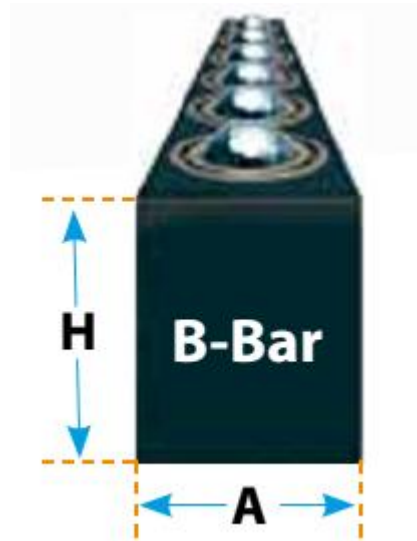
Heavy duty precision machined



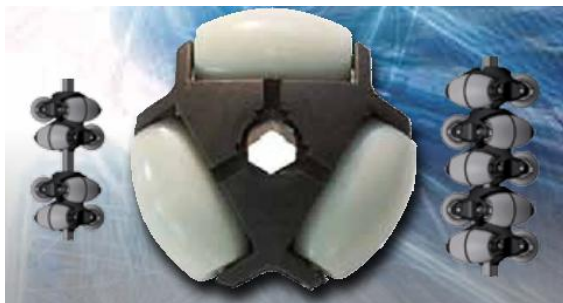
Full Acetal



Spring loaded types



"T" and "B" bars



Omni wheel solutions



Float and wheel